

BTC-38 SERIES

biltec®

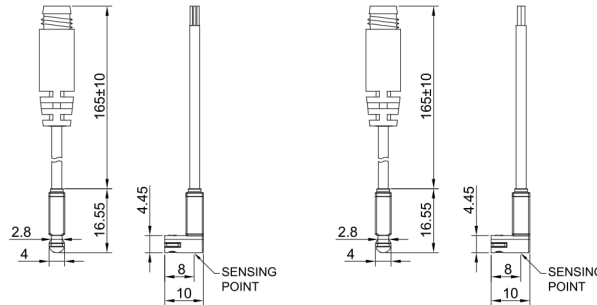


NEW
COMPACT SIZE



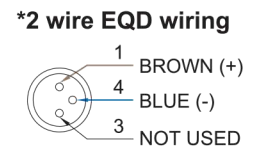
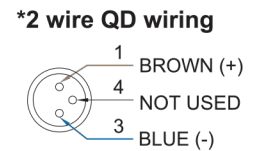
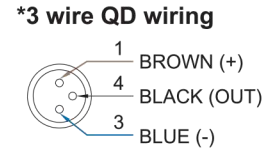
■ DIMENSIONS

BTC-38N, BTC-38P, BTC-38D, BTC-38D-QD
BTC-38N-QD, BTC-38P-QD



Unit:mm

■ QD PINOUT



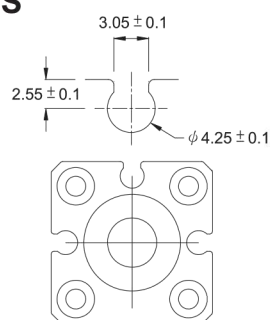
■ SPECIFICATIONS

| TYPE | BTC-38D | BTC-38N | BTC-38P |
|--------------------------|-----------------------------------|---------------------|----------------------|
| CONNECT DIAGRAM | | | |
| CHARACTERISTICS | | | |
| Wiring Method | 2-Wire Type | 3-Wire Type | |
| Switching Logic | Solid State Output, Normally Open | | |
| Sensor Type | - | NPN Current Sinking | PNP Current Sourcing |
| Operating Voltage | 10~28V DC | 5~28V DC | |
| Switching Current | 4~20mA max. | 50mA max. | |
| Contact Rating (*1) | 0.6W max. | 1.5W max. | |
| Current Consumption | - | 10mA @ 24V DC max. | |
| Voltage Drop | 3.5V max. | 0.5V @ 50mA max. | |
| Leakage Current | 0.8mA max. | 0.01mA max. | |
| Indicator | Red LED | | |
| Cable | ø2.6, 2C, PVC | ø2.6, 3C, PVC | |
| Operating Frequency | 1000Hz | | |
| Magnet Requirement (*2) | 40Gauss | | |
| Temperature Range | -10~70°C | | |
| Shock (*3) | 50G | | |
| Vibration (*4) | 9G | | |
| Enclosure Classification | IEC 60529 IP67 | | |
| Protection Circuit (*5) | 4 | 3,4 | |

NOTE:

1. WARNING: Never exceed rating (Watt=Voltage x Amperage). Permanent damage to sensor will occur.
2. Measuring standard target: ø15.5Xø8X5t (Anisotropy rubber magnet)
3. Sin wave / X, Y, Z 3 directions / 3 times each direction / 11 ms each time.
4. Double amplitude 1.5 mm / 10Hz~55Hz~10Hz (Sweep 1 min) / X, Y, Z 3 directions / 1 hour each time.
5. 1=None / 2=Short-circuit / 3=Power Source Reverse polarity / 4=Surge Suppression

■ GROOVE DIMENSIONS



Unit:mm