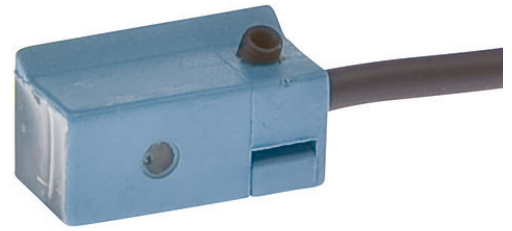


MR152107**MAGNETIC SENSORS • SENSORS FOR PNEUMATIC CYLINDERS**

10-30V AC/DC,150mA/2,5m Kabel

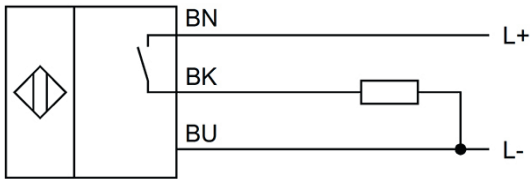
**TECHNICAL DATA**

Ambient temperature	-25 °C ... 80 °C
Cable length	2.5 m
Cross/short circuit identification possible	Yes
Cylinder sensors	Yes
Degree of protection (IP)	IP67
Harsh environmental conditions	No
Housing design	Cuboid
Housing material	Plastic
Increased ambient temperatures > 80°C	No
Low sensitivity	No
Low switching hysteresis	No
Material of cable sheath	PVC
Max. output current	150 mA
Metal housing	No
Metallic sensor surface	No
Number of wires	3
Oil and cooling lubricants	No
Operating voltage	10 V ... 30 V
Rated supply voltage at DC	10 V ... 30 V
Reed contact	Yes
Reverse polarity protection	Yes
Sensor height	10.5 mm
Sensor length	10 mm
Sensor surface position	Centre of the device
Sensor width	20 mm
Setting via teach-in	No
Short travel path	No
Short-circuit-proof	Yes
Strong vibration / motion	No
Suitable for safety functions	No

TECHNICAL DATA

Switching capacity	2 W
Two switching points	No
Type of actuation	Magnet
Type of electrical connection	Cable
Type of switching function	Normally open contact
Type of switching output	Dry reed contact
Voltage type	DC
With LED display	Yes
With monitoring function of downstream devices	No

CONNECTION



Colors: BN (brown), BU (blue), BK (black)
Functions: BN = L+, BU = L-, BK = PNP NO

DIMENSIONAL DRAWING

INSTALLATION



Mounting / Installation may only be carried out by a qualified electrician!

DISPOSAL



SAFETY WARNINGS

Before initial operation, please make sure to follow all safety instructions that may be provided in the product information!

Never use these devices in applications where the safety of a person depends on their functionality.

