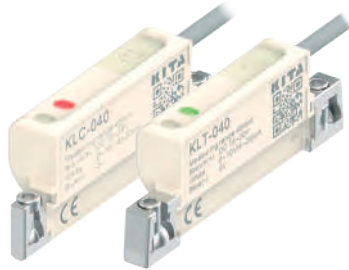


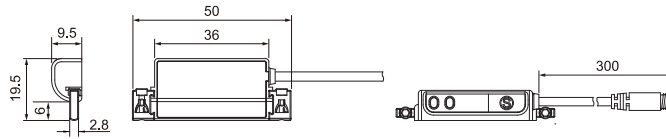
KLC / KLT SERIES

Patented

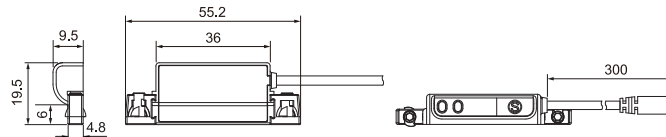


Dimensions

KLC - 040 / KLC - 040 - QD



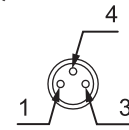
KLT - 040 / KLT - 040 - QD



Unit : mm

QD Pinout

QD



1 : DC (+)

3 : DC (-)

4 : Analog output

Specifications

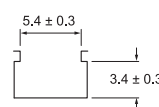
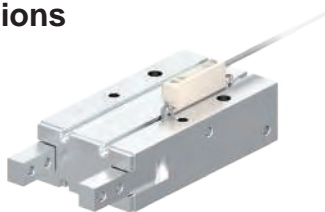
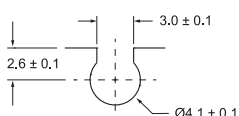
MODEL	KL□ - 040	
Connect Diagram		
Characteristics		
Measuring Range	40 mm, ± 1 mm	
Power Supply Voltage	15 ~ 30 V DC, Ripple (P-P) ≤ 10 %	
Current Consumption	≤ 15 mA (with no load)	
Displacement Resolution ※1	0.001 mm	
Linearity Error ※1	± 0.2 mm @ 25 °C	
Repeatability ※1	± 0.01 mm @ 25 °C	
Sampling Time	≤ 0.3 ms	
Analog Voltage Output ※2	Voltage Output : 0 ~ 10 V Max. Load Resistance, Current Output : 2 KΩ Linearity : ± 0.05 % F.S. @ 25 °C Sensitivity : 0.25 mV/μm	
Analog Current Output ※2	Current Output : 4 ~ 20 mA Min. Load Resistance, Voltage Input : 500 Ω Linearity : ± 0.05 % F.S. @ 25 °C Sensitivity : 0.4 μA/μm	
Magnetic Field Strength ※1, 3	20 ~ 200 Gauss	
Environment	Enclosure	IEC 60529 IP69
	Ambient Temp. Range	Operation : 0 ~ 50 °C ; Storage : -10 ~ 60 °C (No condensation or freezing)
	Ambient Humidity Range	Operation / Storage : 35 ~ 85 % RH (No condensation)
	Withstand Voltage	1000 V AC in 1-min (between case and lead wire)
	Insulation Resistance	≥ 50 MΩ (at 500 V DC, between case and lead wire)
	Shock ※4	30 G
Vibration ※5	10 G	
Protection Circuit ※6	3, 4	
Lead Wire	Ø2.9 PUR - 26 AWG (0.15mm ²) - 3 cores	
Weight (with 2 Meter Lead Wire)	Approx. 33 g (KLC-40) ; Approx. 37 g (KLT-40)	

NOTE

※1 : Measuring standard target : Ø15.5 × Ø8 × 5t
 (The movement of anisotropy rubber magnet and piston are from same direction.)
 ※2 : Only one of Analog output can be selected while setting.
 ※3 : The difference of magnetism, environment, and interference of magnetic field can cause the deviation of measurement.

※4 : Sin wave / X, Y, Z 3 directions / 3 times each direction / 11 ms each time.
 ※5 : Double amplitude 1.5 mm or 10 G / 10 Hz ~ 55 Hz ~ 10 Hz (Sweep 1 min) / X, Y, Z 3 directions / 2 hours each time.
 ※6 : 1 = None / 2 = Short-circuit / 3 = Power Source Reverse polarity / 4 = Surge Suppression

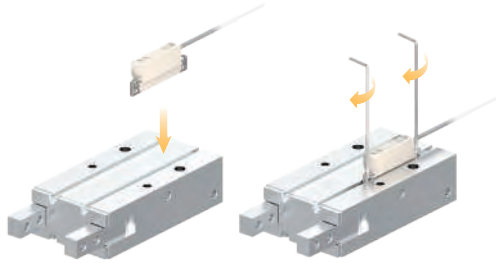
Groove Dimensions



Unit : mm

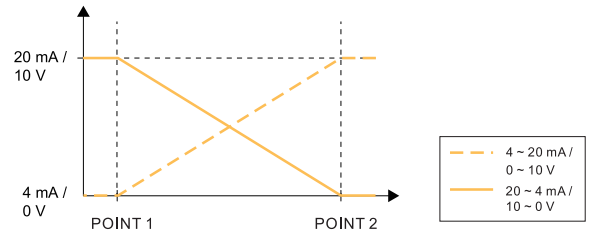
Features Highlight

1 Quick Installation

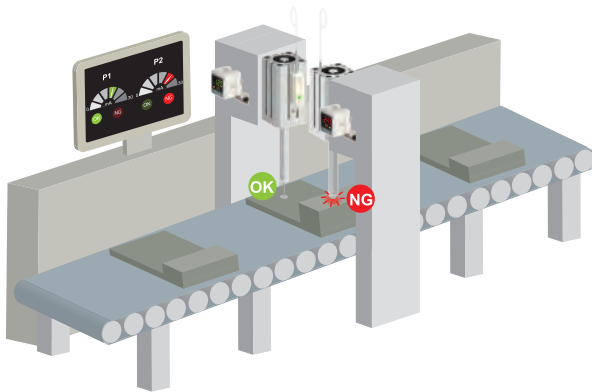


2 Analog Output Function

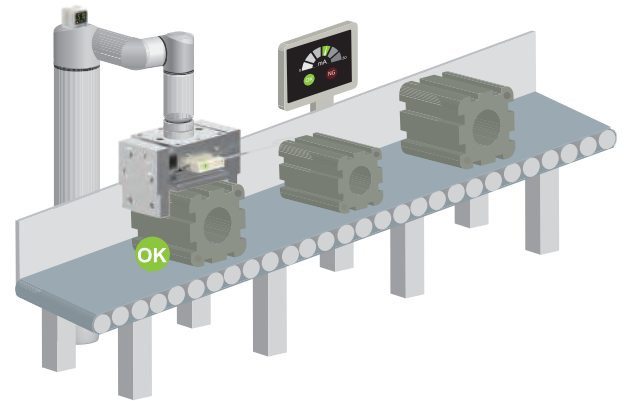
- Analog voltage / current output can be switched.
- Analog output can be inverted.



3 Thickness Differentiation

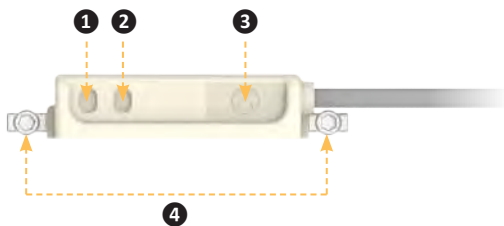


4 Dimension Measurement

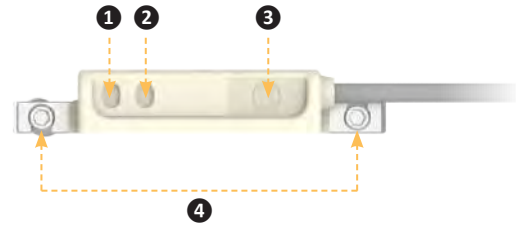


Panel Description

■ KLC - 040 - □



■ KLT - 040 - □



No.	Content
1	Mode Indicator
2	Information Indicator
3	Setting Button
4	Mounting screw, Hexagon wrench (2.0 mm)

Ordering Information

K L C - 0 4 0 - □

Cylinder Type

C : C slot
T : T slot

Measuring Range

040 : 40 mm

Cable Length / Connector

Blank : 2M
QD : With M8 3Pin male connector