

CS - 30E(F),S series - Sensor switch

CHELIC PNEUMATIC

◉ Suitable for cylinder



◉ Reed sensor switch

Model	Cylinder	Bore size
CS-30E	JD,JTD	Ø12~Ø100
	TD,STU	Ø16~Ø32
	TB,TSB	Ø32~Ø63
	STB,STC,STD,STF	Ø32~Ø50
	RTP	5~30
CS-30F	SCR(L)	Ø20~Ø63
	STM	Ø16~Ø32
	TXB	Ø16~Ø63
	MRU	Ø10~Ø40

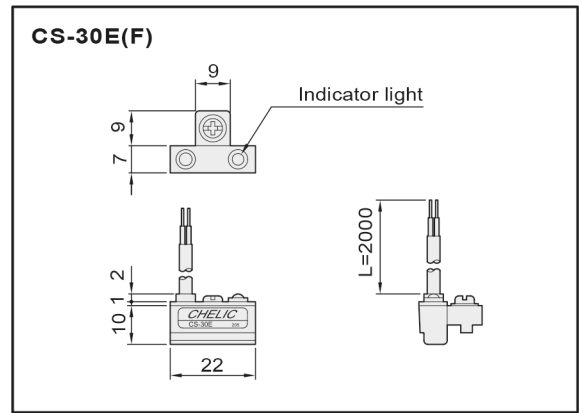
◉ Specification

Item	Model	CS-30E(F)	CS-30S
Wiring system		Two lead wire type	
Switching voltage	V	DC : 5 ~ 240V AC : 5 ~ 240V	
Switching current	mA	100mA MAX.	
Contact capacity		10W MAX.	
Delay time		< 2ms (500 Hz)	
Contact		Normal open	
Protection grade		IP-67	
Color of indicator light		Red	
Cable		Ø3.3 Wire cable × 2M	
Voltage drop		3.5V MAX.	
Sensitivity	Note	Normal	High
Contact protective circuit		Non	
Operating temp	°C	-10° ~ 70°	
Weight	g	35±2	

Note : For high sensitivity, add "-S" to the port number.

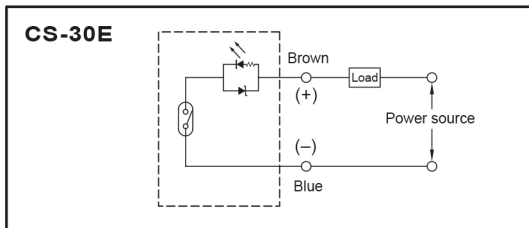
◉ Dimension

Unit : mm

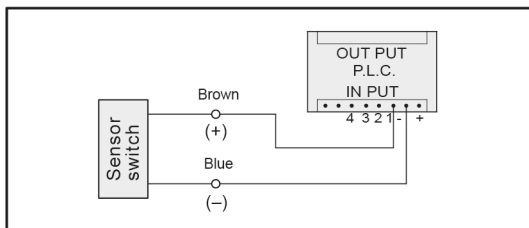


◉ Sensor switch circuit and Connection diagram ◉ Note

● Basic connection : Connect to relay or other resistor



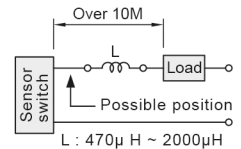
● Connect to the programmable controller



1. When wire length of sensor switch connection load is more than 10 meters, inductor shall be installed near to sensor side to avoid ripple.

2. Applied voltage and current shall not exceed the specified value.

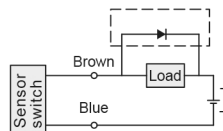
3. When inductive load is connected it is advisable to install protection circuit.



◉ Protect electric circuit

DC load :

Connection in parallel one diode at counter clock-wise direction of two sides of load



AC load :

Connection in parallel one R, C electric circuit at two sides of load.

