

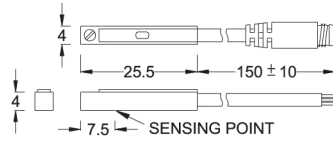
BTC-06 SERIES

biltec®

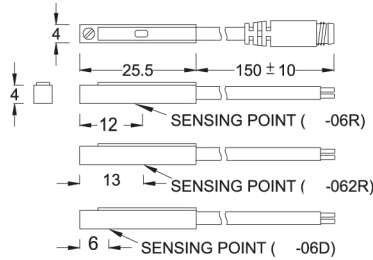


■ DIMENSION

BTC-06N, BTC-06P, BTC-06N-QD, BTC-06P-QD

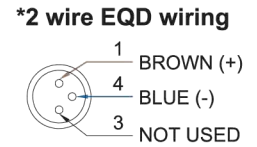
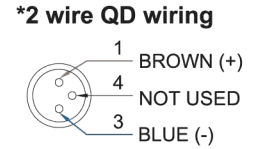
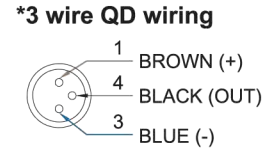


BTC-06R, BTC-062R, BTC-06D, BTC-06R-QD
BTC-062R-QD, BTC-06D-QD



Unit:mm

■ QD PINOUT



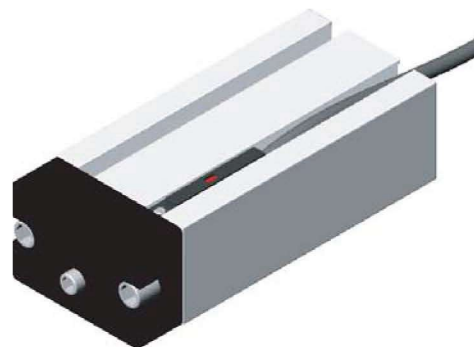
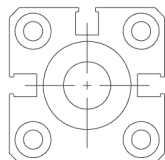
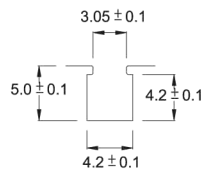
■ SPECIFICATION

TYPE	BTC-06R	BTC-062R	BTC-06D	BTC-06N	BTC-06P
CONNECT DIAGRAM					
CHARACTERISTICS					
WIRING METHOD	2-Wire Type			3-Wire Type	
SWITCHING LOGIC	SPST, Normally Open			Solid State Output, Normally Open	
SENSOR TYPE	Reed Switch			NPN Current Sinking	PNP Current Sourcing
OPERATING VOLTAGE	5~120V DC/AC	5~240V DC/AC	10~28V DC	5~30V DC	
SWITCHING CURRENT	100 mA max.			4~40 mA max.	200 mA. max.
CONTACT RATING (NOTE 1)	10 W max.			1.5 W max.	6W max.
CURRENT CONSUMPTION	--			8 mA @ 24V DC max.	
VOLTAGE DROP	3.5 V max.			1 V @ 200mA max.	
LEAKAGE CURRENT	--			1 mA max.	0.01 mA max.
INDICATOR	Red LED	Green LED	Red LED		Green LED
CABLE	ø2.8, 2C, PUR			ø2.8, 3C, PUR	
OPERATING FREQUENCY	200 Hz			1000 Hz	
MAGNET REQUIREMENT (NOTE 2)	70 Gauss			40 Gauss	30 Gauss
TEMPERATURE RANGE	-10~70°C				
SHOCK (NOTE 3)	30 G			50 G	
VIBRATION (NOTE 4)	9 G				
ENCLOSURE CLASSIFICATION	IEC 529 IP 67				
PROTECTION CIRCUIT (NOTE 5)	1		4	2,3,4	

NOTE:

1. WARNING: Never exceed rating (Watt=Voltage x Amperage). Permanent damage to sensor will occur.
2. Measuring standard target: ø15.5Xø8X5t (Anisotropy rubber magnet)
3. Sin wave / X, Y, Z 3 directions / 3 times each direction / 11 ms each time.
4. Double amplitude 1.5 mm / 10Hz~55Hz~10Hz (Sweep 1 min) / X, Y, Z 3 directions / 1 hour each time.
5. 1=None / 2=Short-circuit / 3=Power Source Reverse polarity / 4=Surge Suppression

■ GROOVE DIMENSION



Unit:mm

Pressure Switch

Magnetic Switch

Circular Connector